

# How do I Find my Auto-Saved Drawing Files?

My computer crashed while I was working on my drawing! How do I find my auto-saved drawing files?

**Answer:**

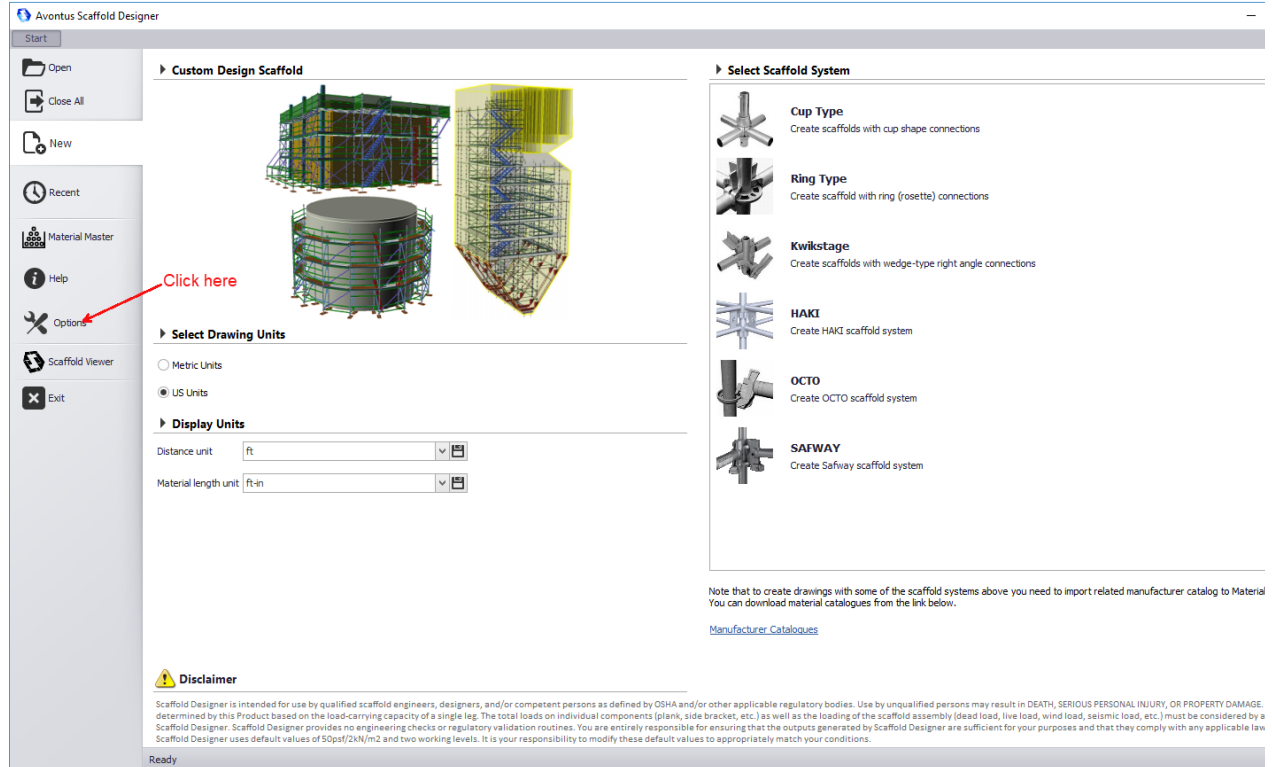
After a crash, you can easily find the last auto-saved drawing file for the drawing in your default drawing folder.

To find your auto-saved drawing files:

1. As necessary, launch Avontus.

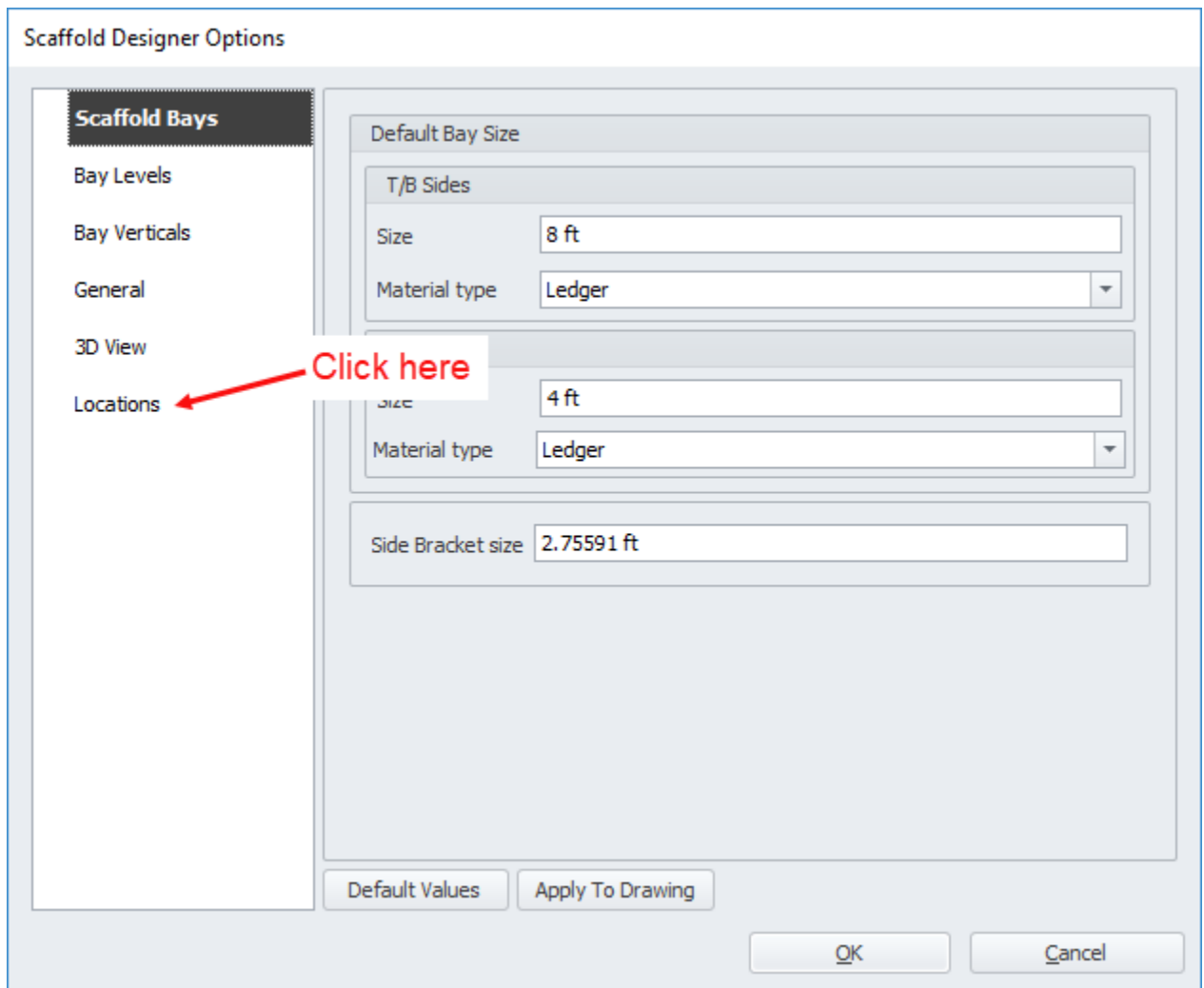
The *Backstage* appears with the **New** option selected.

2. Click **Options**.



The *Options* dialog appears, with the **Scaffold Bays** tab pre-selected.

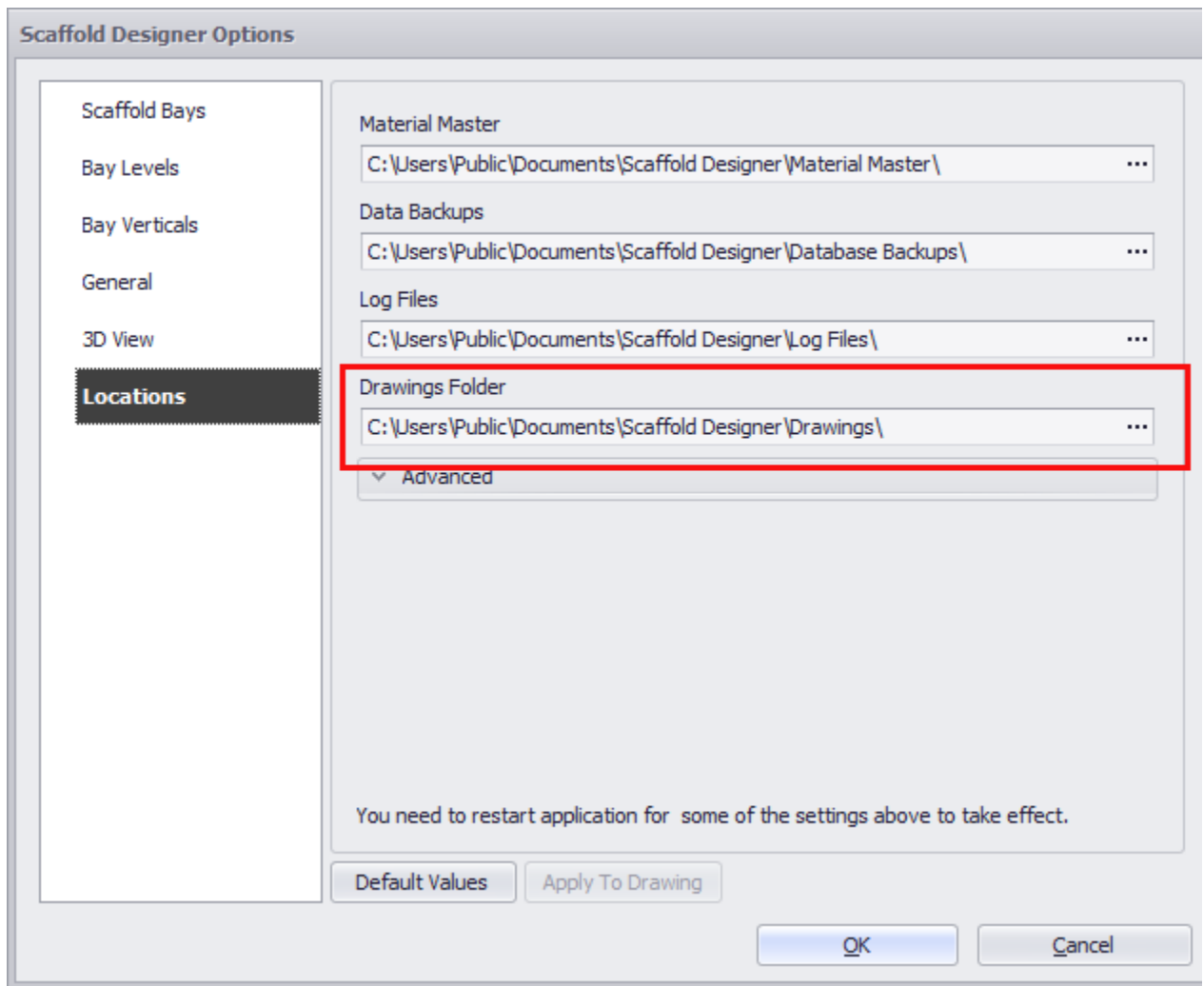
3. Click the **Locations** tab in the *Avontus Options* dialog.



The *Avontus Options* dialog refreshes, displaying default file location options.

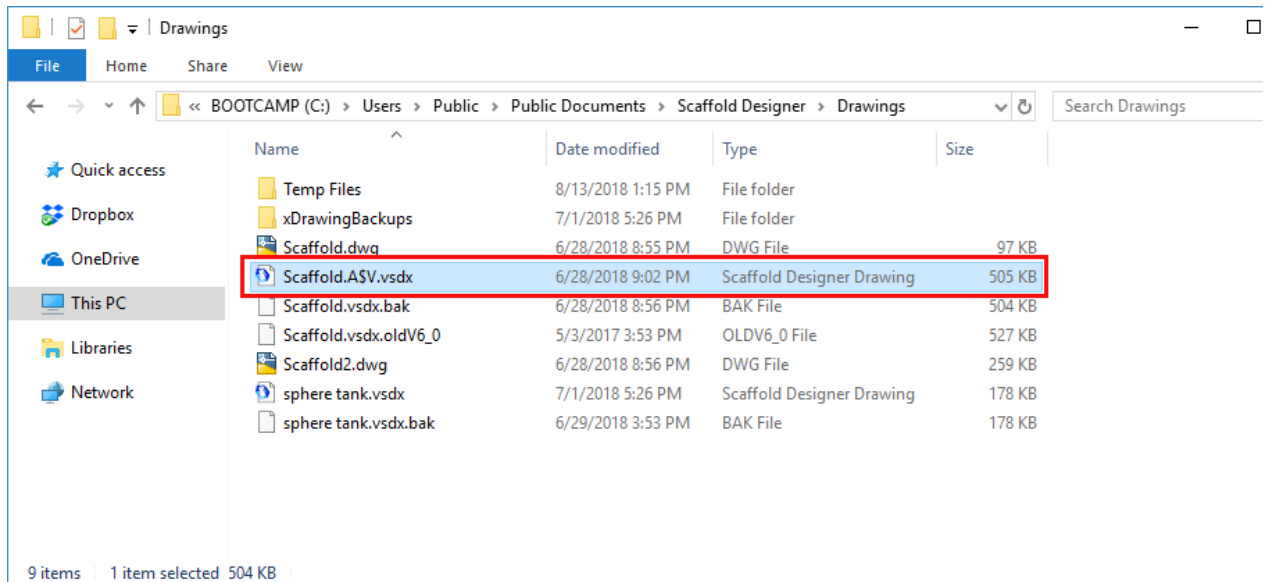
4. Look in the **Drawings Folder** text field to learn where Avontus auto-saves your drawing files.

**Note:** You can change the default locations in this tab at any time.



Once you have found your default auto-save location, you can open the latest auto-saved version of a drawing.

5. Launch a File Explorer window and navigate to the folder into which Avontus auto-saves your drawing files.
6. Locate and double-click the auto-save file to open it in Avontus. (The auto-save file name ends in .A\$V.vsd.)



**Note:** You can also open the drawing with the **Open** button in the *Backstage* above.

To learn how to adjust the frequency with which Avontus auto-saves your drawings, refer to [Setting Default General Options](#).