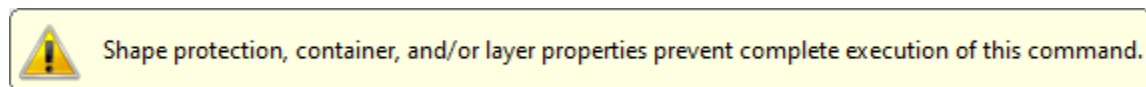
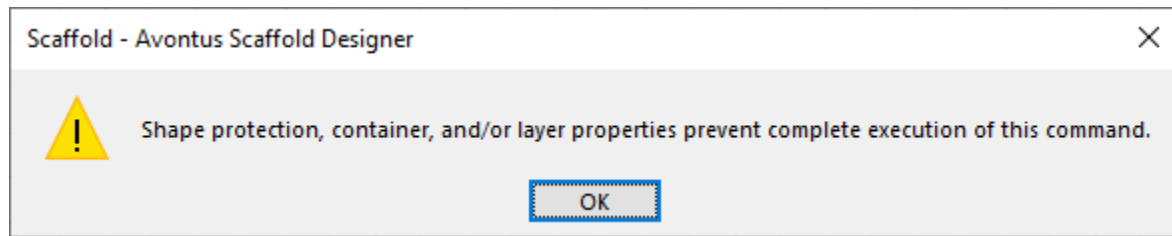


I Receive a Shape Protection Error When I Try to Delete Something, Why?

Why do I receive the following error when I try to delete certain items in a drawing? "Shape protection, container, and/or layer properties prevent complete execution of the command."



Answer:

This is a Visio message that Avontus Designer cannot prevent. Despite this message, Avontus Designer will delete the selected items from the drawing.